

Steps to preparing for your pets:

- Identify your pet: If you become separated from your pet at any point during an emergency, their ID tags could be the only way to locate them. Make sure your animal wears a collar and ID tag at all times. You can also have your pet micro-chipped by a veterinarian. Once micro-chipped, your information is securely stored in the event that your pet's collar or tags are lost. Contact your vet for more information.
- Plan for evacuations: The best way to protect your pet in an emergency is to bring it with you. However, most evacuation shelters only accept service animals. Make a list of where you can take your pet in case of an evacuation. Some possibilities may include hotels that accept animals, animal clinics, animal shelters, family members, and friends.
- Include a contact number for a veterinarian on your Emergency Contact list.
- Keep vaccinations up to date.
- Have a Pet Kit ready to go at all times.



Emergency Supplies for your Pet Kit:

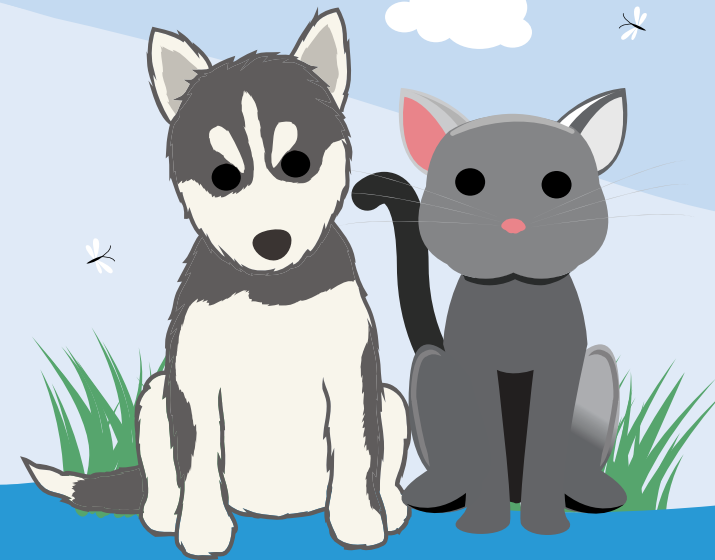


- A three-day supply of food, drinking water, bowls, bedding, cat litter, and a container to be used as a litter box.
- Current photos and descriptions of your pet.
- An up-to-date identification tag in case your pet gets lost.
- Medications, medical records and a first-aid kit stored in a water proof container.
- Sturdy leashes, harnesses, and carriers to transport pets to safety.
- Blankets or towels for bedding or warmth.
- A favorite toy.



PREPARING FOR EMERGENCIES: PET AND SERVICE ANIMALS

Not all surprises are welcome.
Emergencies strike quickly
and without warning.



BE READY.
www.maca.gov.nt.ca



When an emergency or disaster strikes, taking care of family members is the priority.



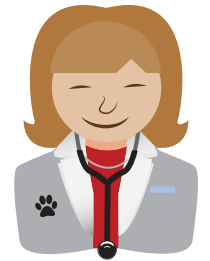
If an animal is a part of your family, this guide will help ensure your pet's safety in the case of an emergency.

During An Emergency

- Keep your pet inside during severe weather. Animals are very sensitive to sudden changes in temperature and often hide and isolate themselves when scared.
- Never leave your pet outside or tied when there's a storm. Bring them inside immediately.
- Separate cats and dogs and keep smaller animals like hamsters away from larger animals like cats. Stress can lead to unusual behavior.
- Keep newspaper for hygiene purposes and feed your pet wet food in order to reduce the amount of water it may need.
- During transportation put your pet in a portable kennel. When they're distressed, they can bolt from a vehicle.
- If you must leave your house, take your pet according to your emergency plan and don't forget to pack your Pet Kit.

After An Emergency

- Animals can experience trauma, so don't be surprised if your pet's behavior changes temporarily. Your pet may be confused or more quiet than usual. It may also become more aggressive or defensive.
- Stay nearby and keep a close eye on your pet.
- Keep your pet leashed when you take them outside for the first few days until they adjust to their surroundings again, and you know everything is safe.
- Always keep your pet away from downed power lines.
- If you have any questions about your pet's behavior, contact a veterinarian.



**Make a Plan.
Make a Kit.
Stay Connected.**

BE READY.

www.maca.gov.nt.ca



If You Must Leave Your Pet Behind

- Put your pet in a safe, secure room without windows, but with adequate ventilation (i.e. bathroom).
- Leave enough food to last seven days.
- Fill up the sink, bathtub and / or containers with water that won't easily tip over.
- Your pet will be distressed and may drink more water than usual. Depending on the size of your pet, 5 to 10 litres of water per day is the guideline.
- Put dogs and cats in separate areas or rooms.
- Ensure your pet is wearing identification tags.
- Put a note on the front door stating there are pets in the house, and where they are located. Leave a phone number where you or a contact can be reached.
- If you expect flooding, leave access to elevations like counter tops.
- Never leave a pet outside.

